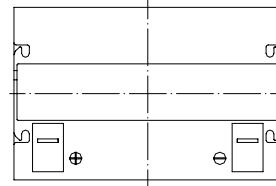
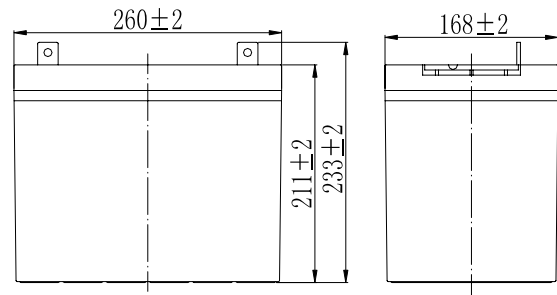


**Specifications**

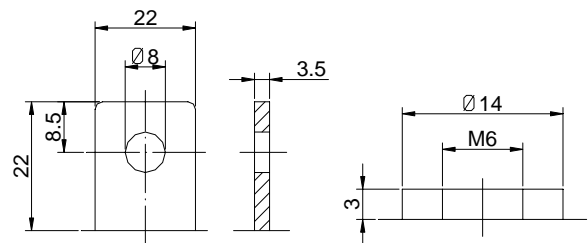
|   |              |   |
|---|--------------|---|
| Nominal Voltage                           |              | 12 V  |
| Capacity (25°C)                           | 10HR(10.8V)  | 75 Ah   |
|   | 5HR(10.5V)   | 65Ah  |
|   | 1HR(9.60V)   | 46.5Ah  |
| Dimension                                 | Length       | 260mm ± 2 (10.24inch)                                 |
|   | Width        | 168mm ± 2 (6.61inch)                                  |
|   | Height       | 211mm ± 2 (8.31inch)                                  |
|   | Total Height | T5: 233 ± 2mm (9.17inch)<br>T9: 214 ± 2mm (8.43inch)  |
| Approx. Weight                            |              | 22.5kg (49.6lbs) ± 4%                                 |
| Terminal type                             |              | T5/T9   |
| Internal resistance (Fully charged, 25°C) |              | Approx. 6mΩ   |
| Capacity affected by temperature (10HR)   | 40°C         | 102%  |
|   | 25°C         | 100%  |
|   | 0°C          | 85%   |
|   | -15°C        | 65%   |
| Self-discharge (25°C)                     | 3 month      | Remaining Capacity: 91%                               |
|   | 6 month      | Remaining Capacity: 82%                               |
|   | 12 month     | Remaining Capacity: 65%                               |
| Nominal operating temperature             |              | 25°C ± 3°C (77°F ± 5°F)                               |
| Operating temperature range               | Discharge    | -15°C ~ 50°C (5°F ~ 122°F)                            |
|   | Charge       | -10°C ~ 50°C (14°F ~ 122°F)                           |
|   | Storage      | -20°C ~ 50°C (-4°F ~ 122°F)                           |
| Float charging voltage(25°C)              |              | 13.50 to 13.80V<br>Temperature compensation: -18mV/°C |
| Cyclic charging voltage(25°C)             |              | 14.50 to 14.90V<br>Temperature compensation: -30mV/°C |
| Maximum charging current                  |              | 22.5A   |
| Terminal material                         |              | Copper  |
| Maximum discharge current                 |              | 750A (5 sec.)   |
| Designed floating life(20°C)              |              | 12 years  |



**Dimensions**



**Terminal**



Terminal T5

Terminal T9

- ◆ Absorbent glass mat technology;
- ◆ Recognized by UL & CE;
- ◆ ABS container.

**Constant Current Discharge Characteristics (A, 25°C)**

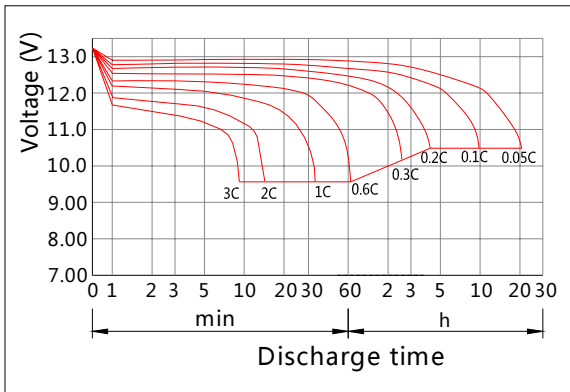
| F.V/TIME | 10min | 15min | 30min | 60min | 2h   | 3h   | 4h   | 5h   | 8h   | 10h  | 20h  |
|----------|-------|-------|-------|-------|------|------|------|------|------|------|------|
| 9.60V    | 158   | 124   | 75.0  | 46.5  | 27.4 | 19.1 | 15.7 | 13.4 | 9.18 | 7.64 | 4.01 |
| 9.90V    | 153   | 121   | 73.5  | 45.8  | 27.2 | 19.0 | 15.6 | 13.3 | 9.13 | 7.62 | 4.00 |
| 10.2V    | 146   | 116   | 71.3  | 44.6  | 27.0 | 18.9 | 15.5 | 13.2 | 9.06 | 7.60 | 3.99 |
| 10.5V    | 140   | 112   | 69.5  | 43.8  | 26.6 | 18.8 | 15.4 | 13.1 | 9.00 | 7.55 | 3.97 |
| 10.8V    | 132   | 106   | 67.0  | 42.4  | 25.9 | 18.2 | 14.9 | 12.7 | 8.73 | 7.50 | 3.94 |

**Constant Power Discharge Characteristics (Watt, 25°C)**

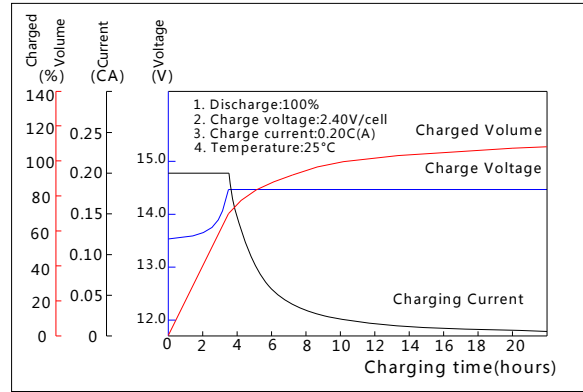
| F.V/TIME | 10min | 15min | 30min | 60min | 2h  | 3h  | 4h  | 5h  | 8h  | 10h  | 20h  |
|----------|-------|-------|-------|-------|-----|-----|-----|-----|-----|------|------|
| 9.60V    | 1701  | 1359  | 842   | 530   | 317 | 225 | 184 | 158 | 109 | 91.2 | 48.1 |
| 9.90V    | 1650  | 1326  | 825   | 522   | 315 | 224 | 183 | 157 | 108 | 91.0 | 48.0 |
| 10.2V    | 1582  | 1277  | 799   | 509   | 313 | 222 | 182 | 156 | 108 | 90.7 | 47.9 |
| 10.5V    | 1514  | 1234  | 780   | 499   | 308 | 221 | 181 | 155 | 107 | 90.2 | 47.6 |
| 10.8V    | 1429  | 1169  | 751   | 483   | 300 | 214 | 175 | 150 | 104 | 89.6 | 47.3 |

Note: The above characteristics data can be obtained within three charge/discharge cycles.

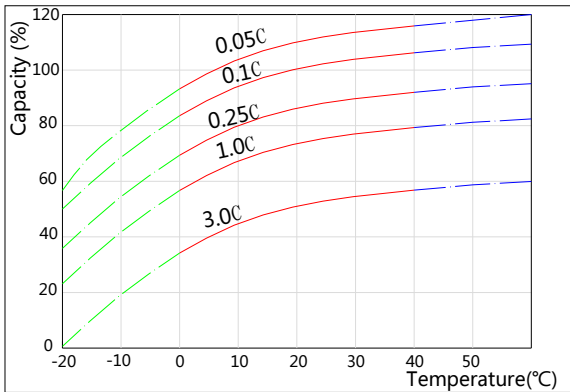
**Discharge Characteristics(25°C)**



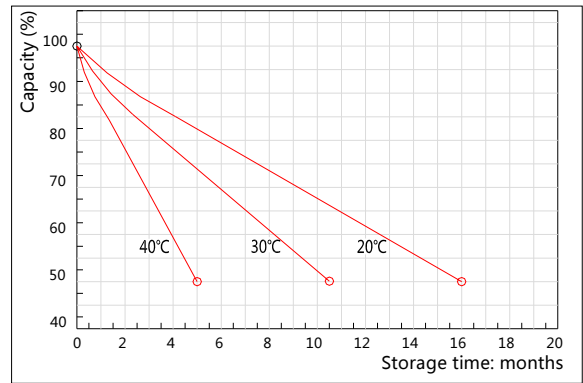
**Charging Characteristics(25°C)**



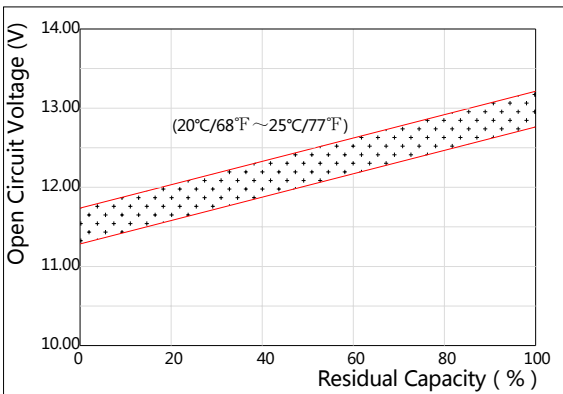
**Effect of Temperature on Capacity**



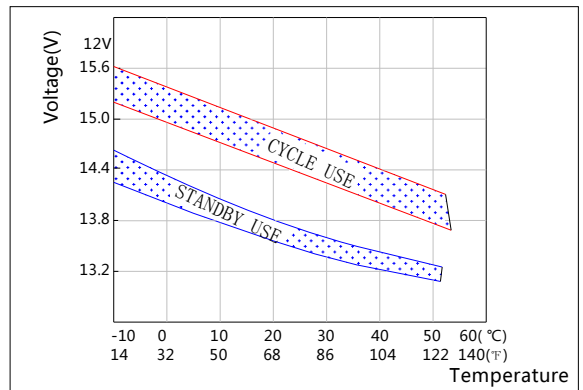
**Self-discharge Characteristics**



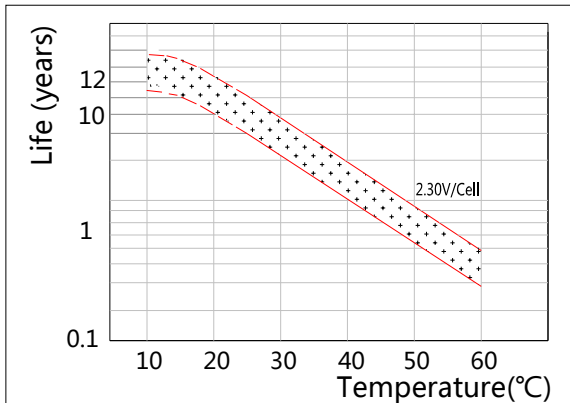
**The Relationship for Open Circuit Voltage and Residual Capacity (25°C)**



**The Relationship for Charging Voltage and Temperature**



**Floating Life on Temperature**



**Cycle Life on D.O.D(25°C)**

